

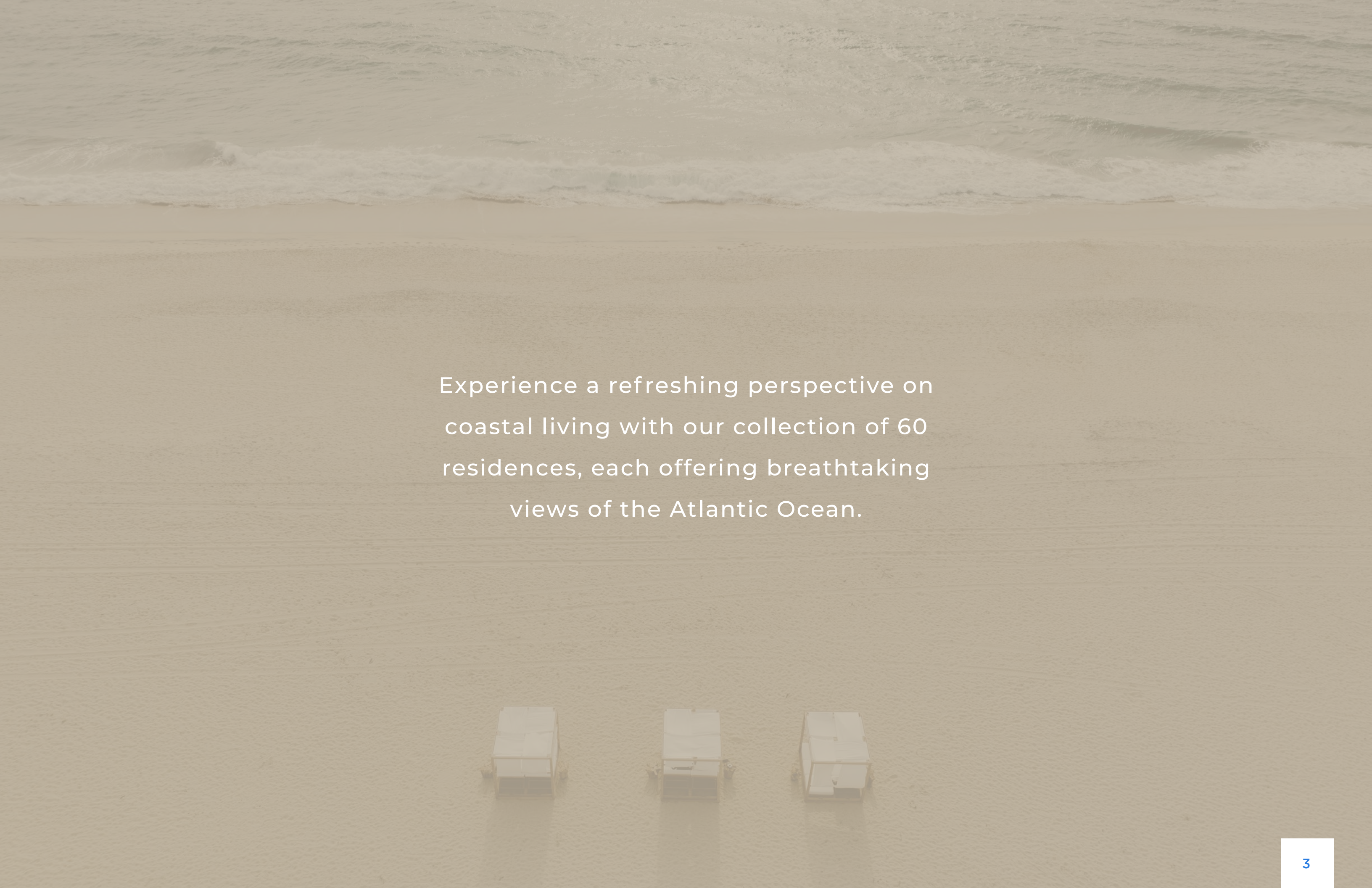


MAREAL
Cabarete

MAREAL

- BLOQUE A
- BLOQUE B
- PISCINA
- BARCO

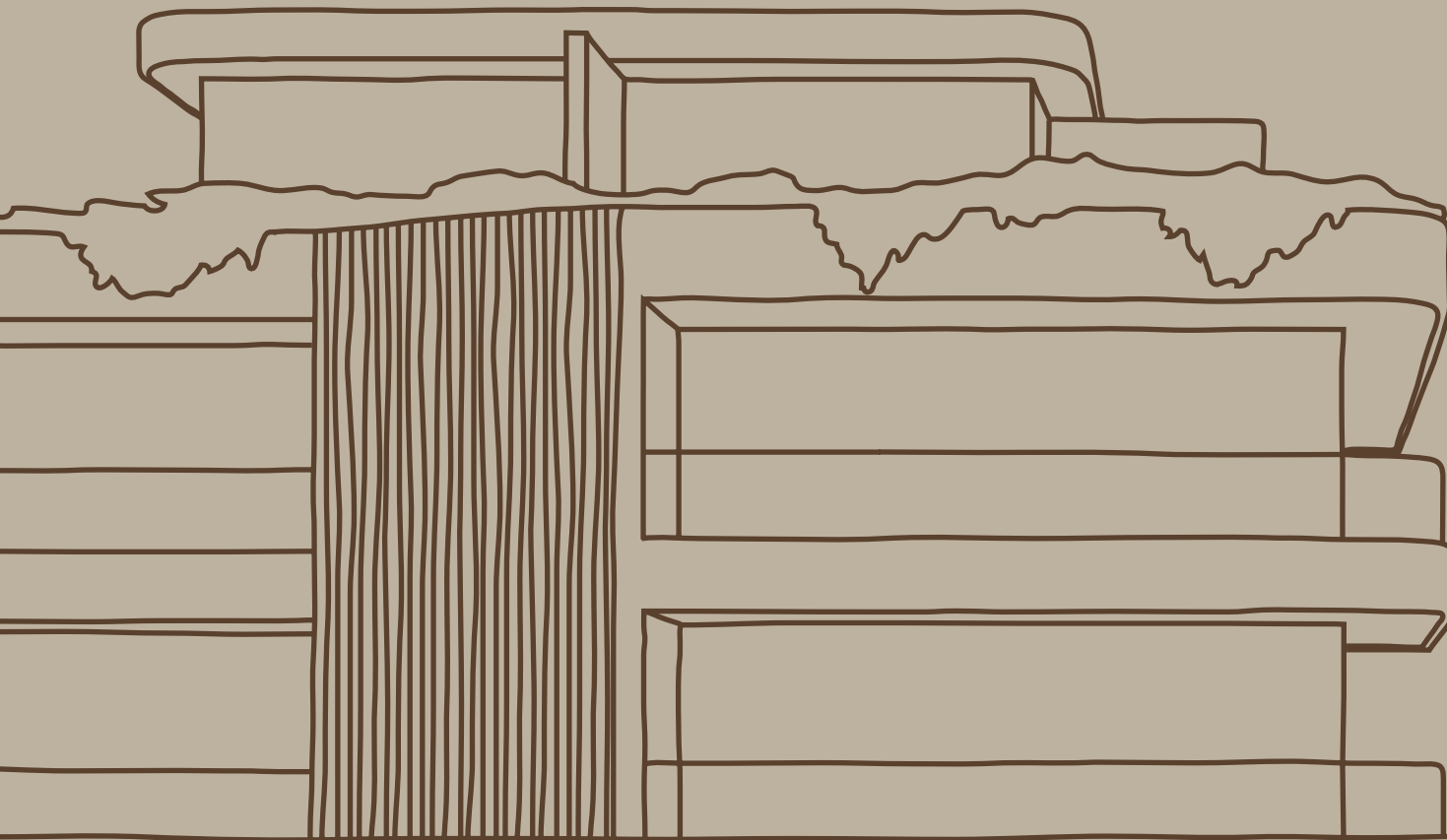


An aerial photograph of a wide, sandy beach. The ocean waves are visible at the top of the frame, washing onto the shore. In the lower third of the image, three small, white, rectangular structures are arranged in a horizontal line on the sand. The overall scene is serene and coastal.

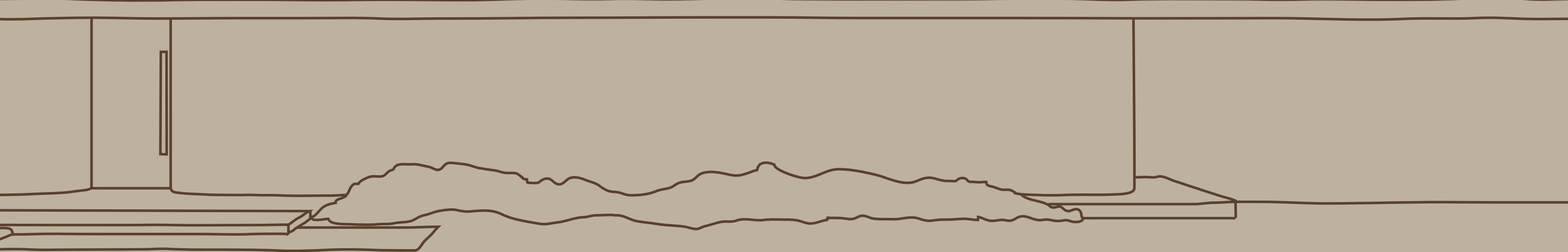
Experience a refreshing perspective on coastal living with our collection of 60 residences, each offering breathtaking views of the Atlantic Ocean.

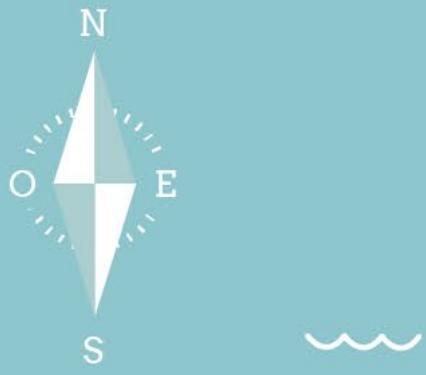


MAREAL



Located in the heart of Kite Beach and only a few minutes away from Cabarete Bay, Mareal offers a dynamic lifestyle brimming with exhilarating water sports, culinary delights, and charming local shops.





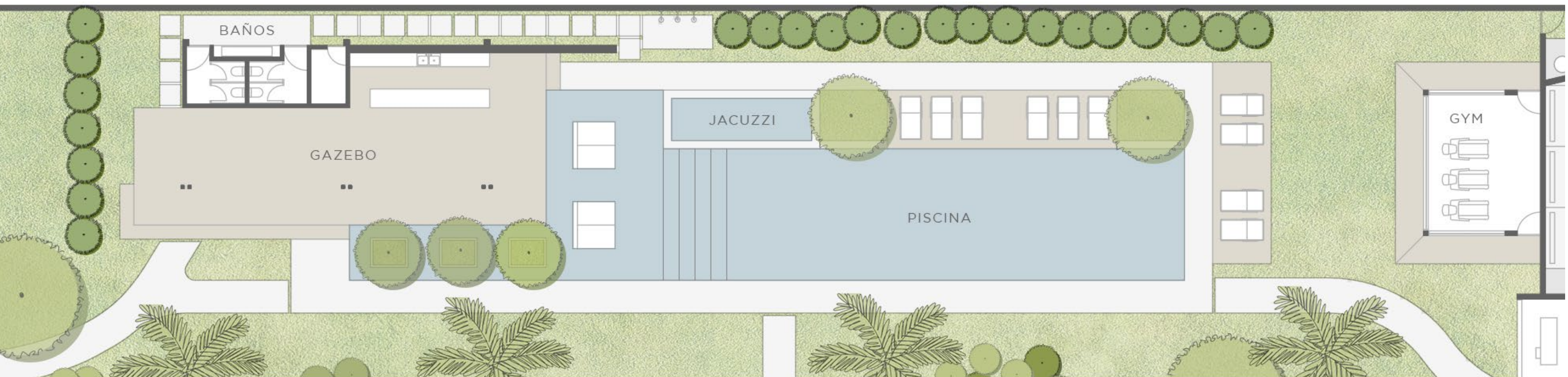
?

LUGARES

- 1** Gasolinera Texaco
- 2** Centro Cabarete
- 3** Gorditos Fresh
- 4** Vagamundo
- 5** Gasolinera Shell
- 6** Viva Wyndham Tangerine
- 7** Ultravioleta Residences
- 8** Kite Club Cabarete
- 9** Kite Beach Hotel
- 10** Wind Center Cabarete
- 11** Encuentro Food Park
- 12** El Encuentro Surf Lodge
- 13** Parque Nacional El Choco

SITEPLAN





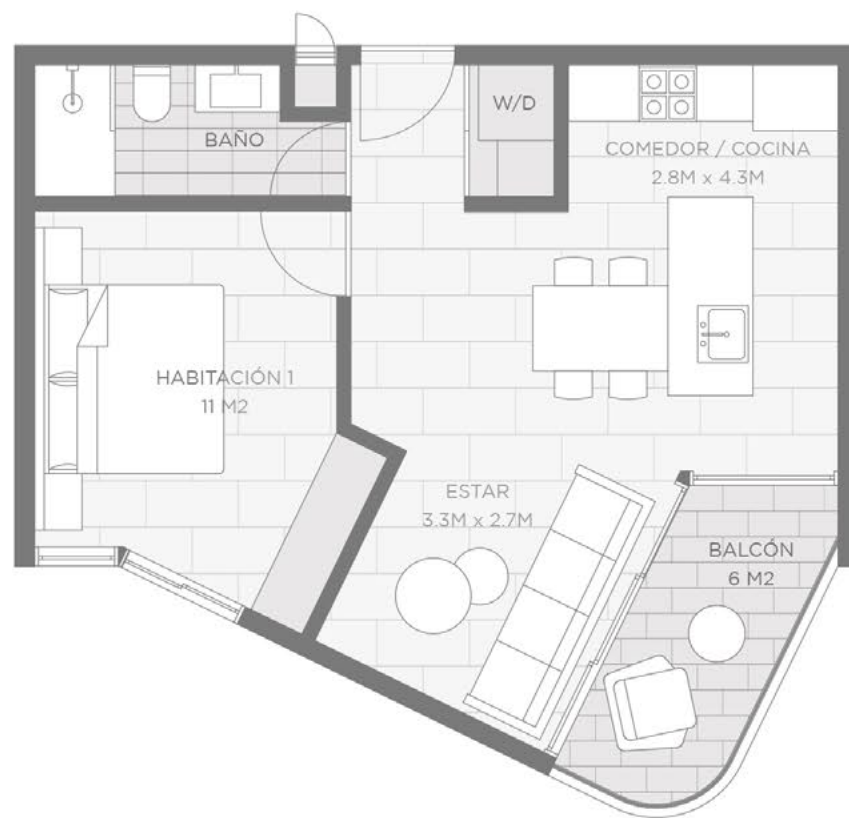
AMENIDADES





APARTAMENTOS





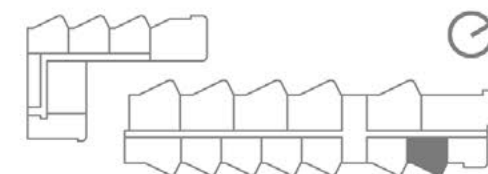
A 103

1 habitación
1 baño

ÁREA TOTAL
59 m²

ÁREA INTERIOR
53 m²

ÁREA BALCÓN
6 m²





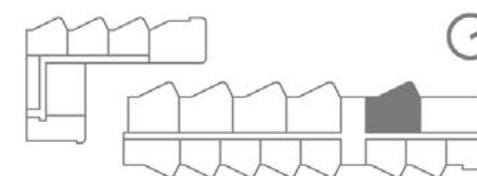
A 104

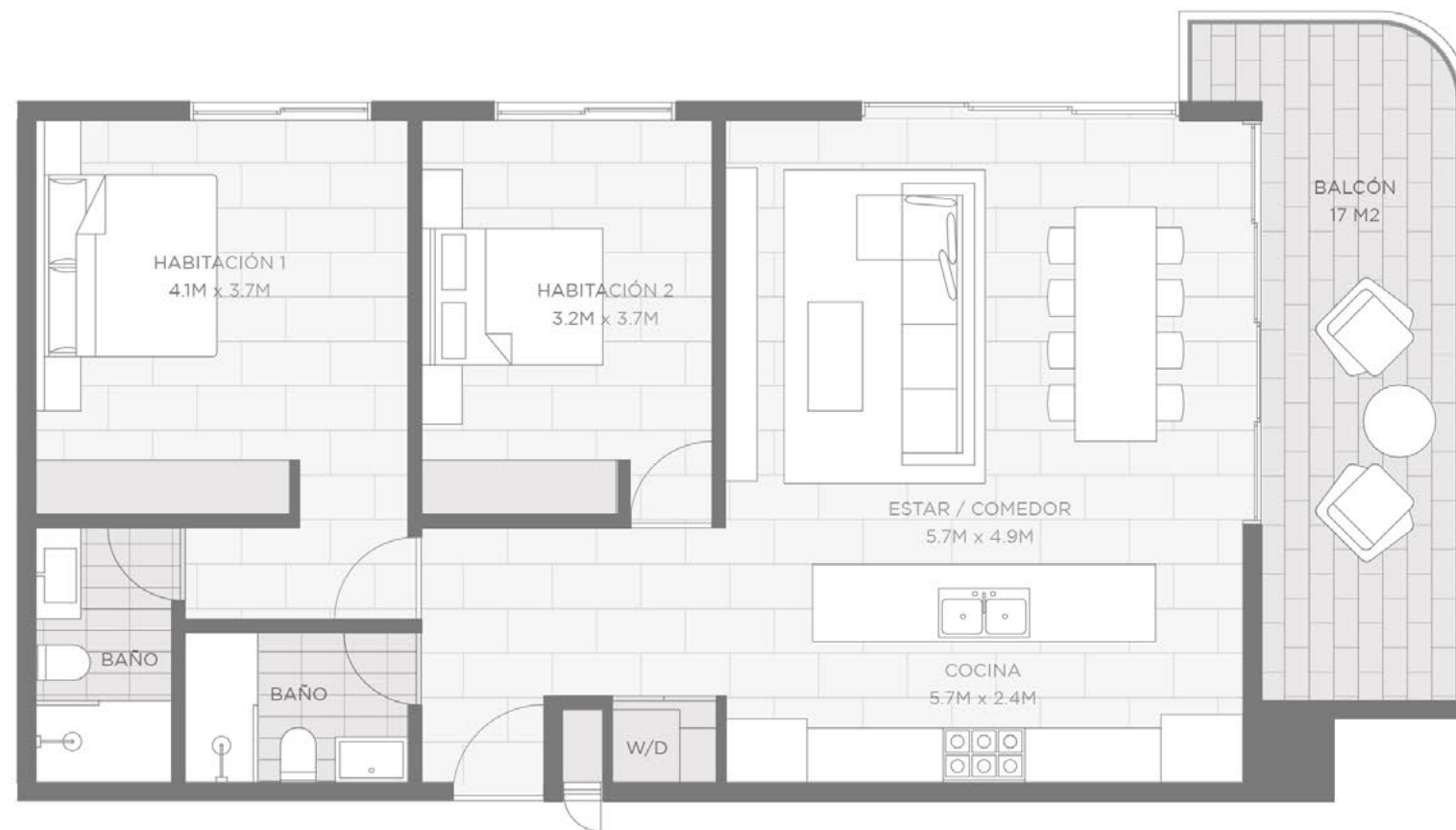
2 habitaciones
2 baños

ÁREA TOTAL
104 m²

ÁREA INTERIOR
91 m²

ÁREA BALCÓN
13 m²





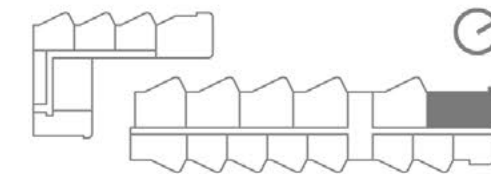
A 102

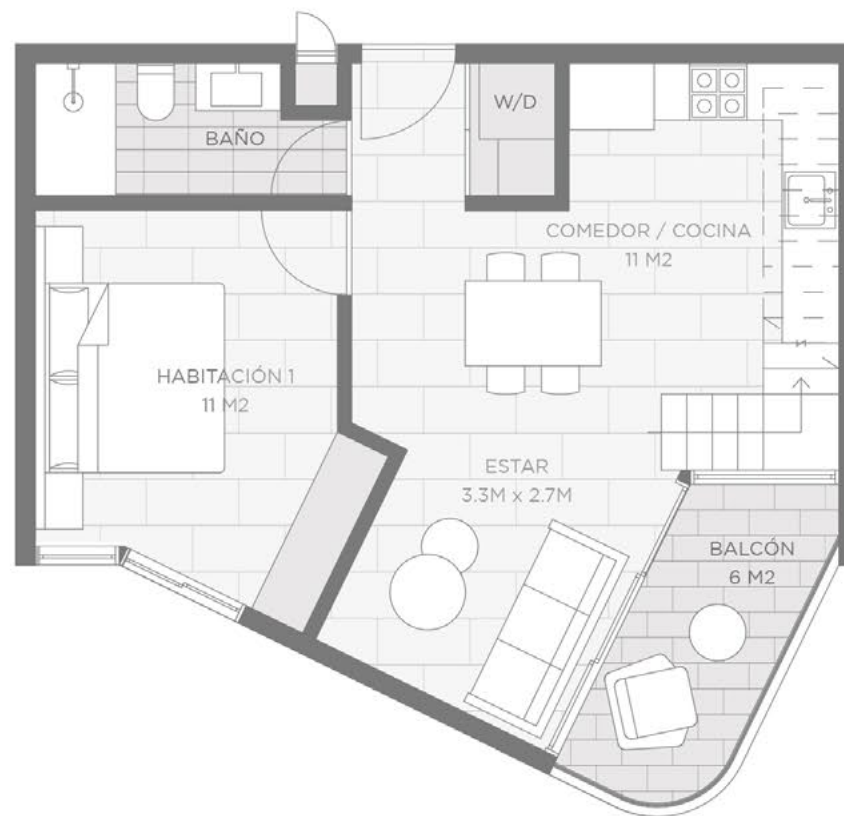
2 habitaciones
2 baños

ÁREA TOTAL
122 m²

ÁREA INTERIOR
105 m²

ÁREA BALCÓN
17 m²





A 303

2 habitaciones
2 baños

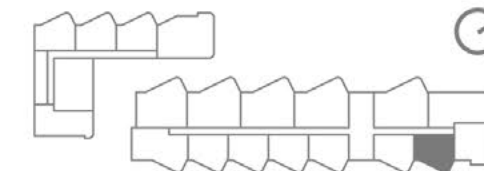
ÁREA TOTAL
132 m²

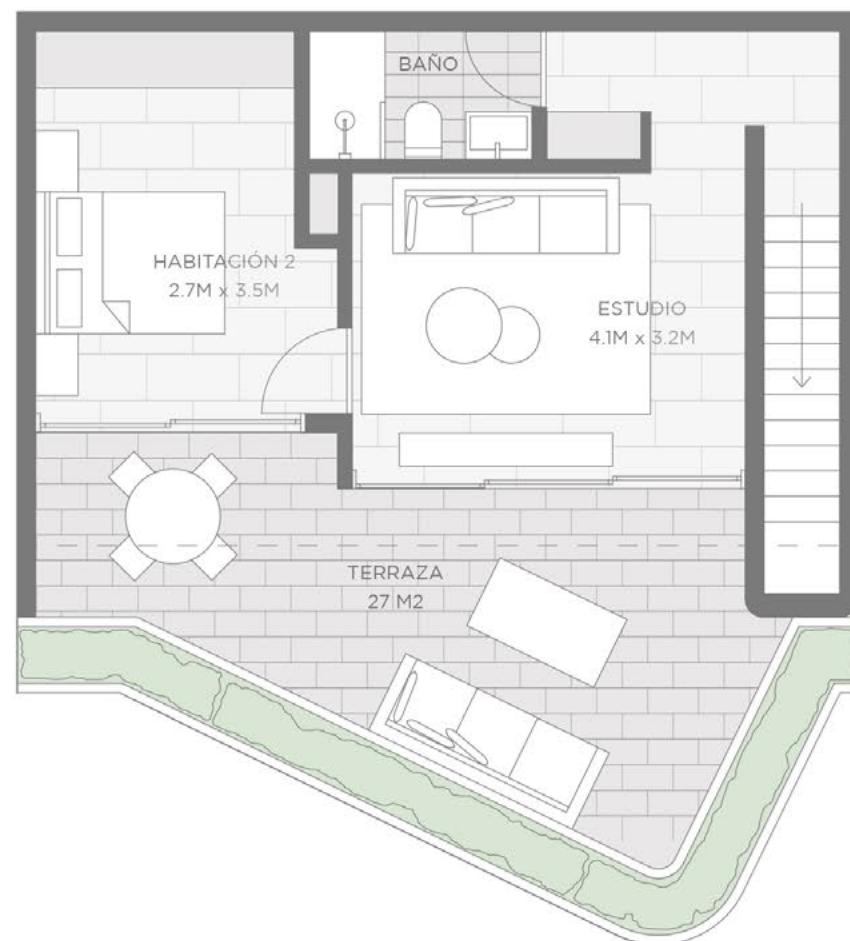
ÁREA INTERIOR 1ER NIVEL
53 m²

ÁREA BALCÓN
6 m²

ÁREA INTERIOR 2DO NIVEL
42 m²

ÁREA TERRAZA
27 m²





A 303

2 habitaciones
2 baños

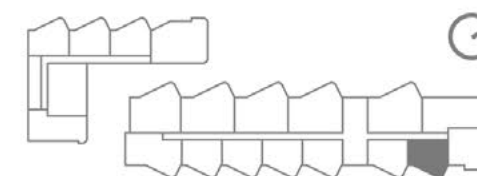
ÁREA TOTAL
132 m²

ÁREA INTERIOR 1ER NIVEL
53 m²

ÁREA BALCÓN
6 m²

ÁREA INTERIOR 2DO NIVEL
42 m²

ÁREA TERRAZA
27 m²





A 304

3 habitaciones
3 baños

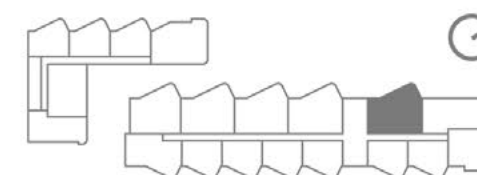
ÁREA TOTAL
208 m²

ÁREA INTERIOR 1ER NIVEL
93 m²

ÁREA BALCÓN
13 m²

ÁREA INTERIOR 2DO NIVEL
50 m²

ÁREA TERRAZA
47 m²





A 304

3 habitaciones
3 baños

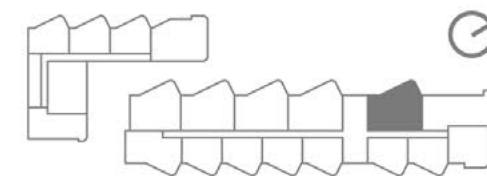
ÁREA TOTAL
208 m²

ÁREA INTERIOR 1ER NIVEL
93 m²

ÁREA BALCÓN
13 m²

ÁREA INTERIOR 2DO NIVEL
50 m²

ÁREA TERRAZA
47 m²





MODALIDAD DE PAGO

SEPARACIÓN

5% Para Reservar la Unidad
(45 días de reserva)

INICIAL 15%

A la firma de la Promesa de Venta

50% DURANTE LA CONSTRUCCIÓN

20% CONTRA ENTREGA DE UNIDAD

**10% CONTRA ENTREGA
DE TÍTULO**

